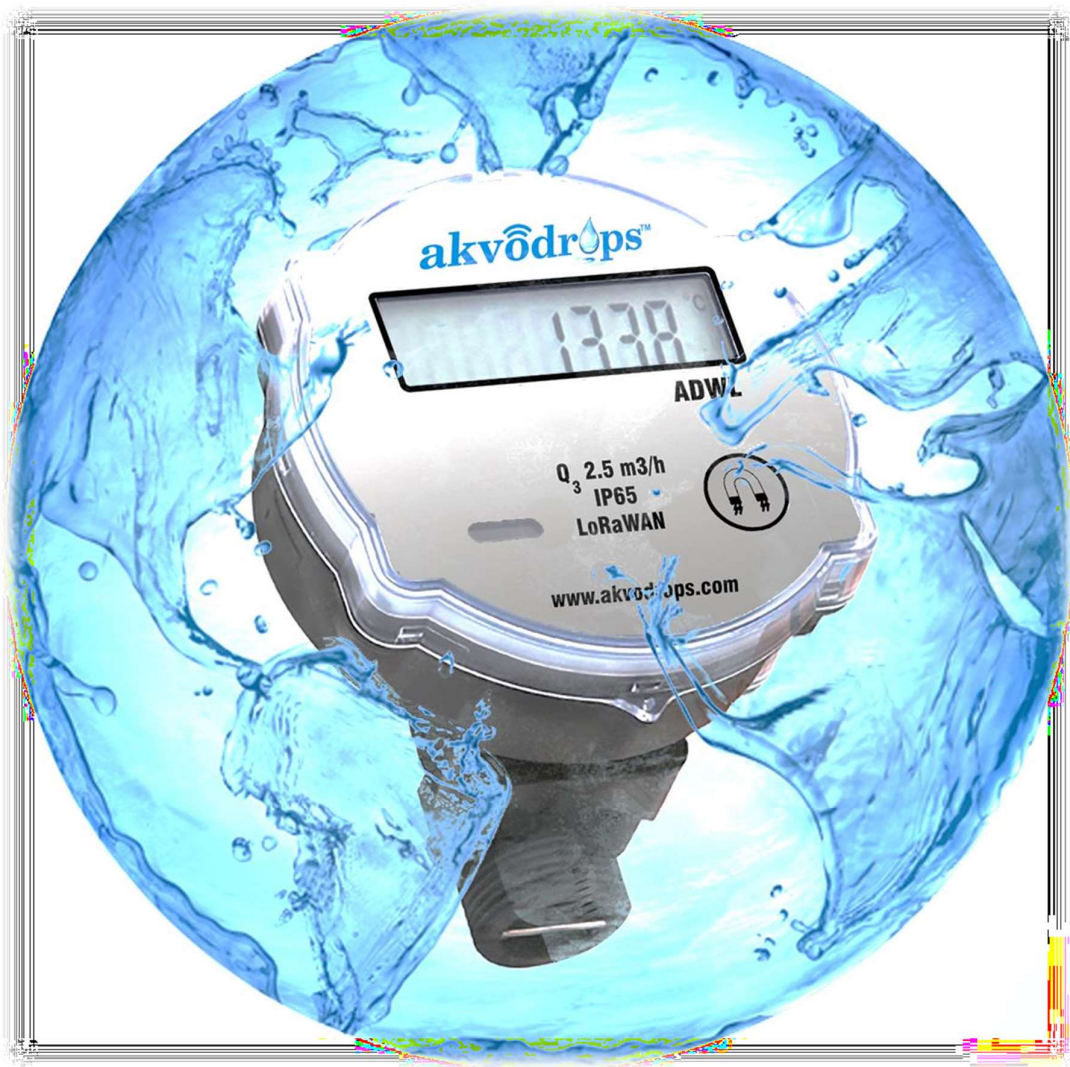


ADW Lite



every drop counts...

INTRODUCTION

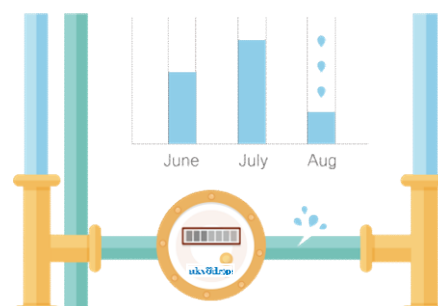
ADW Lite launched by Enthi is designed with basic functions with food-class paraffinylene amide PPA with fiber glass composite material. It combines years, experience in ultrasonic technology, adopting state-of-the-art technology and sophisticated testing. It has been proven that ADW Lite is reliable and absolute matured achievement in high accuracy measurement.

In addition, the special compact design does completely assure the quality of water-proof protection. The accuracy is guaranteed even if it is installed under water in a long time. Moreover, the core engineering concept of ADW Lite aims at cutting down the budget on overall operating costs from remote meter readings (AMR).



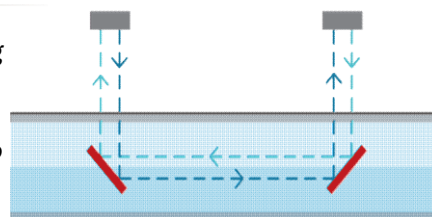
01 The Solution for Addressing NRW

With low starting flow rate of 16l/h, ADWL is a powerful solution for addressing Non-Revenue-Water (NRW). It support water consumption data tracing, this means it is able to detect water physical leaking and improve customer's awareness and satisfaction. Utility get increasing revenue with registration of previously un-metered water. The meter upload the data to system to enable customer detect stable water consumption and recognize it as water leaking problem. By prompt meter reading utility can send people nearly in real time to solve the water



02 No Moving Parts

ADW-Lite offering none moving components in flow sensor, avoid long term abrasion of mechanical parts which may result to inaccuracy measurement and failure of meter. Such design is also resistant to impurities, therefore no-inspections and maintenance cost-free.



03 AMR Ready (wired & wireless)

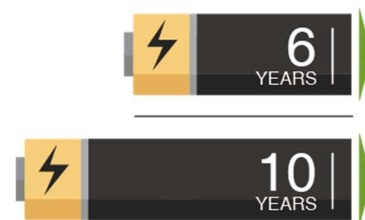
ADW Lite support multiple communication interfaces for both wired and wireless which suitable for any type of installation environment, e.g. MBus, RS485 (Modbus), Pulse, LoRaWAN (868MHz, 915MHz, 923MHz), NB, Sigfox, etc.

With communication interfaces meter is easily integrated into Automatic Meter Reading (AMR), which provide reliable and scalable network to utility and bring down the meter reading cost for any application.



04 Flexible Life Time

ADW-Lite has no moving parts, presents either IP65 or IP68, and its body is fabricated from durable PPA composite material. This robust design makes the ADW Lite maintenance-free and highly precise throughout its flexible 6 or 10 years battery life depends upon customers'needs. measurement.



05 Clean Water Supply (Environment Friendly)

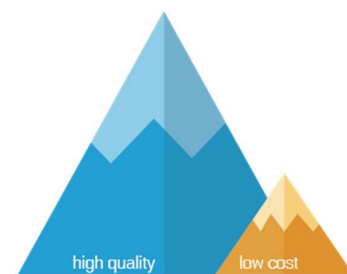
ADW Lite is designed with food-class paraphenylene amide PPA with fiber glass composite material. It can sustain up to 300 centigrade for long term without any change in shape. Besides high temperature it is also able to sustain in different humidity for long duration.

ADW Lite is environment friendly material which is suitable for drinking water without any chemical contaminants material. Easy to get recycled after its usage life. This is highly consistent with ENTHU's slogan 'every drop counts... '.



06 Economic for Measurement

ADW Lite suits for customers with limited budget for water measurement. It offers basic functionality to customer to solve their general technical requirement with reasonable price level. ENTHU is dedicated in providing customer with top quality- price ratio products but with no sacrifice quality and functions. With this ENTHU is able to sustain a long term partnership relationship with our customers in global countries.

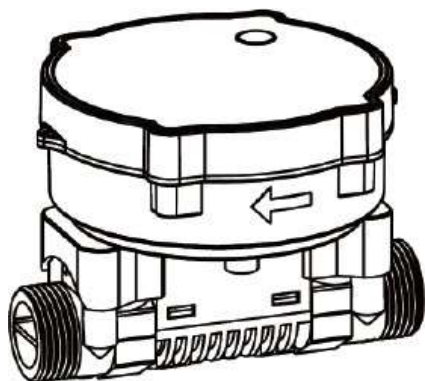


DIMENSIONS

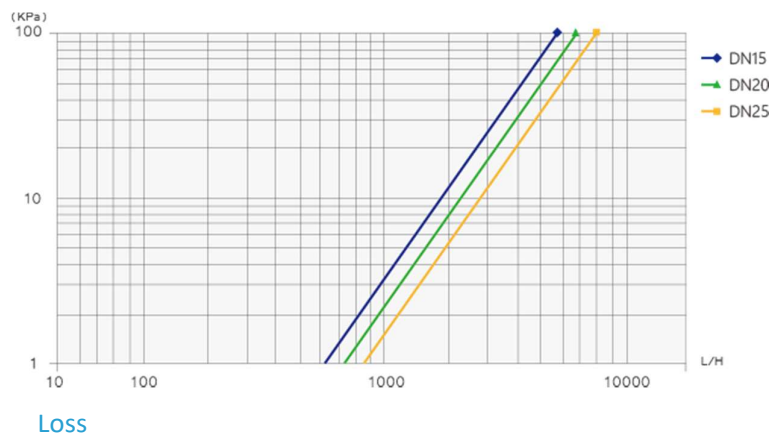
Model	ADWL-15	ADWL-20	ADWL-25
Pipe Diameter	DN15	DN20	DN25
Minimum Flow Rate qi (m ³ /h)	0.016	0.025	0.039
Permanent Flow Rate qp (m ³ /h)	2.5	4.0	6.3
Maximum Flow Rate qs (m ³ /h)	3.125	5.0	7.875
Connection	G3/4'	G1'	G1 1/4'
Length (mm)	110	130	150
Width (mm)	93	93	93
Height (mm)	82	82	92

TECHNICAL SPECIFICATION

Temperature	Medium Range: 0.1°C 30°C (T30) Ambient temperature: 5~55 °C Storage temperature -----20~60 °C
Materials	Paraphenylene Amide PPA with fiber glass
Metrological Class	Class 2, R=125/160:1
Maximum Operation Pressure	1.6 Mpa
Pressure Loss	ΔP<63kPa
Pressure Stage	PN16
Protection Class	IP65/IP68
Battery	3.6VDC lithium battery, 6 or 10 years lifetime optional
Data Storage	24 months history data
Environmental Requirement	Environmental Class: E1, M1, B
Interface & Communication	Sigfox M-Bus Optical port Pulse output (optional) RS-485 (optional) LPWAN (LoRa, NB-IoT)
Installation	Horizontal or Vertical
Display and Indication	Unit: m ³ / Gallon (optional) LCD: 8-digit
Standard Compliance	EN14154 ISO4064



ADW-Lite Ultrasonic Water Meter Pressure



Enthu Technology Solutions India Pvt. Ltd.

88 & 89 SSN Square Pudhur,
Peelamedu Pudur,
Coimbatore, Tamil Nadu 641004
Tel No: +91 422 421 7197
E-mail: connect@akvodrops.io

Connect to us,



<https://www.facebook.com/akvodrops/>



<https://twitter.com/akvodrops>



<https://www.instagram.com/akvodrops7/>